



# Lenticular Creation of Thematic Multi-Layer-Models

Prof. Buchroithner, Prof. Dickmann, Kai  
Bröhmer, Claudia Knust

Presented by K. Bröhmer

# Overview

1. Project partners
2. Lenticular foil technique
3. Project aims
4. State of the art
5. Working objectives
6. Outlook

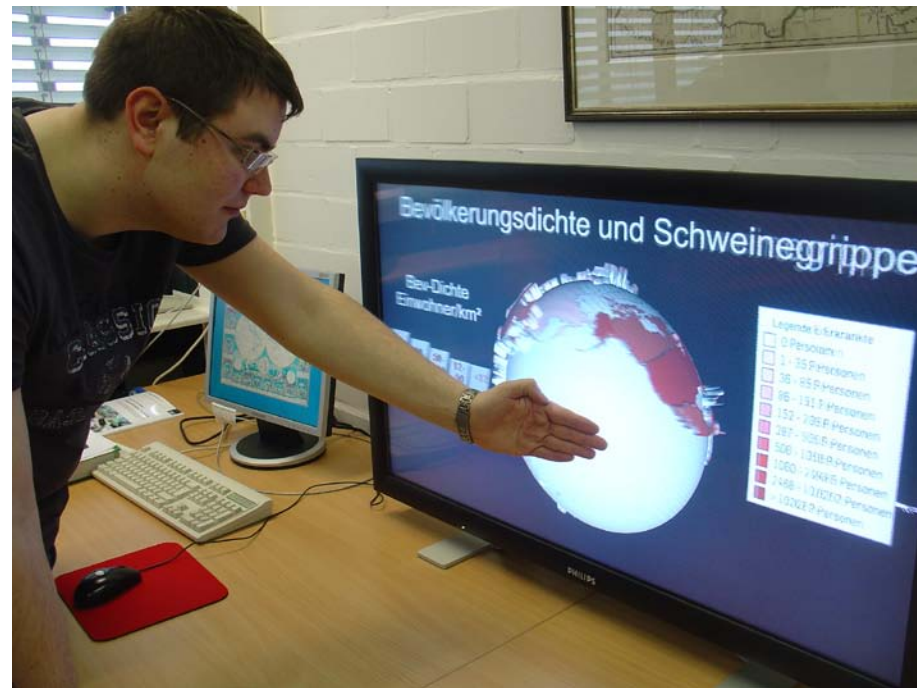


Fig.1: Lenticular display

# Project partners

- Cooperation between Institute for Geography of the Ruhr-University Bochum & Institute for Cartography of the Dresden University of Technology (TU)
- Prof. Dickmann (BO) & Prof. Buchroithner (DD)
- TU Dresden: competence in cartographic 3D-solutions
- Ruhr-University Bochum: experiences in thematic mapping



Fig.2: 3D-Content

# Lenticular foil technique

- Lenses on screen – no need for glasses
- „free-to-move“-feeling → several optimal viewing points (sweet spots)
- Vividly representation of true-3D-content

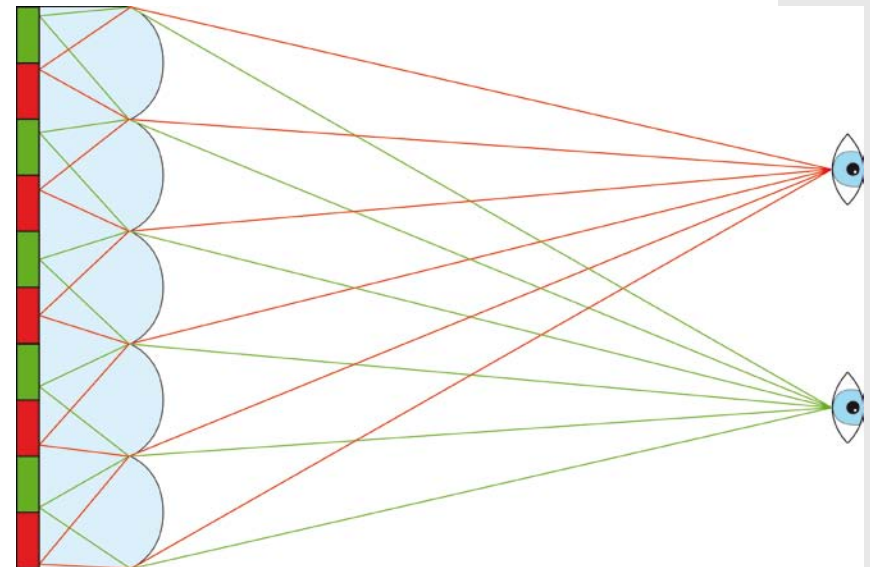


Fig.3: Principle of the Lenticular foil technique

# Lenticular foil technique

- Chance to show multi-layer information maps
- More information in one map
- Much easier for user to get the needed information

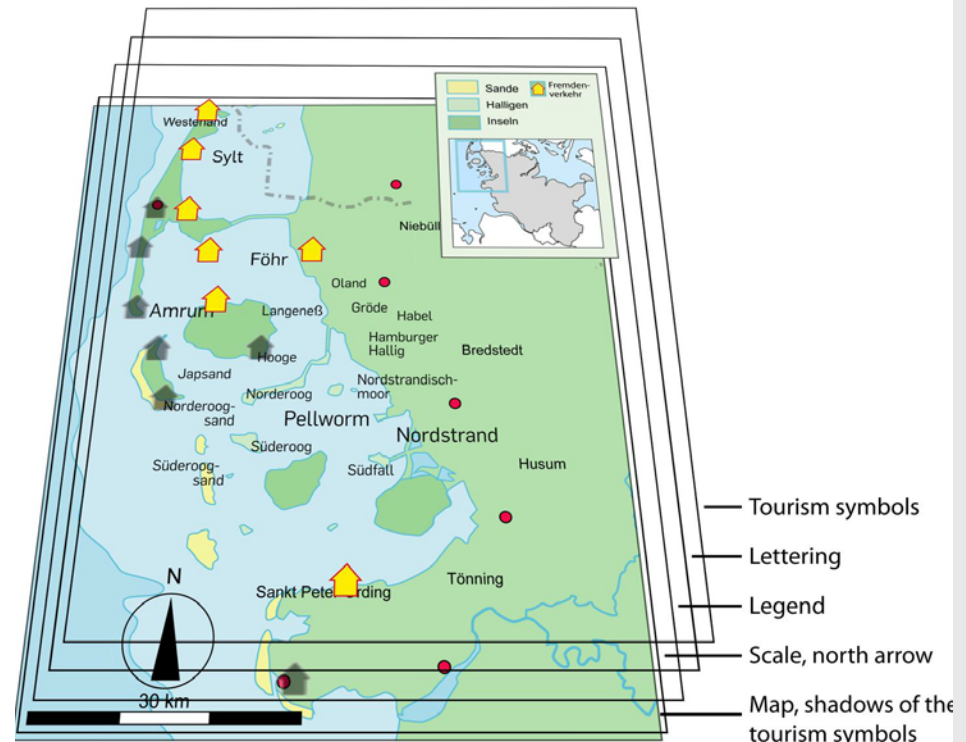


Fig.4: Northern Frisian Islands – arrangement of different layers



# Project aims

- Partners want to point out how useful the lenticular foil technique is for cartographic demands
- Several reasons have to be kept in mind
  - Blur, caused by the lenses
  - Resolution problems



# State of the art

- Although there seems to be a high potential for thematic map use of true-3D-displays, there are no empirical studies on this aspect
- Deficit: the systematic investigation of the use of this technique for cartography based information transfer



# Working objectives

- The examination of thematic map elements, such as the suitability of fonts and font sizes and their arrangement options under lenticular foils
- Goal: minimum dimension of lenticular map symbols



# Working objectives

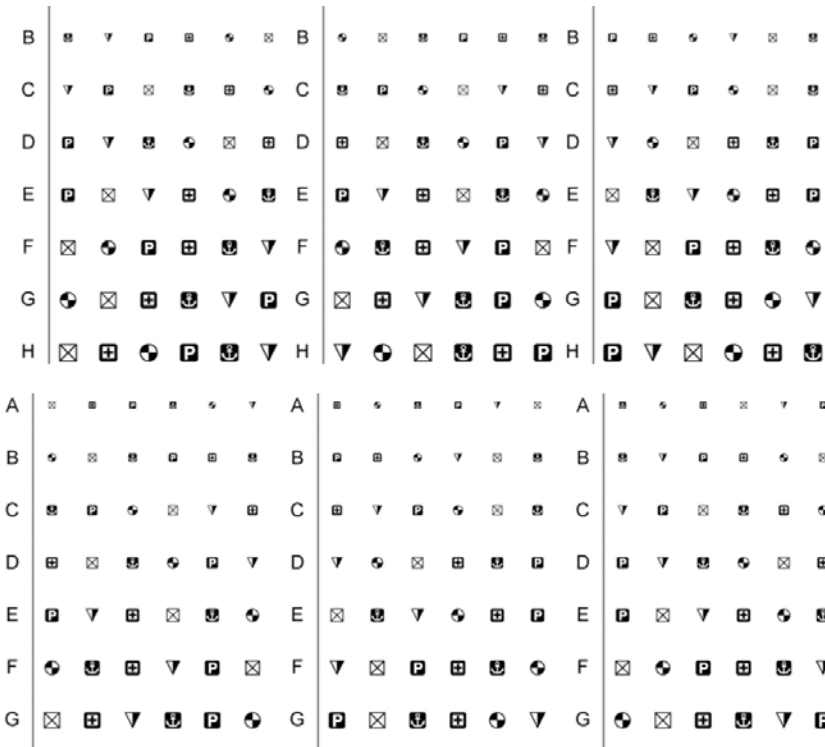


Fig.5: Test pattern 1

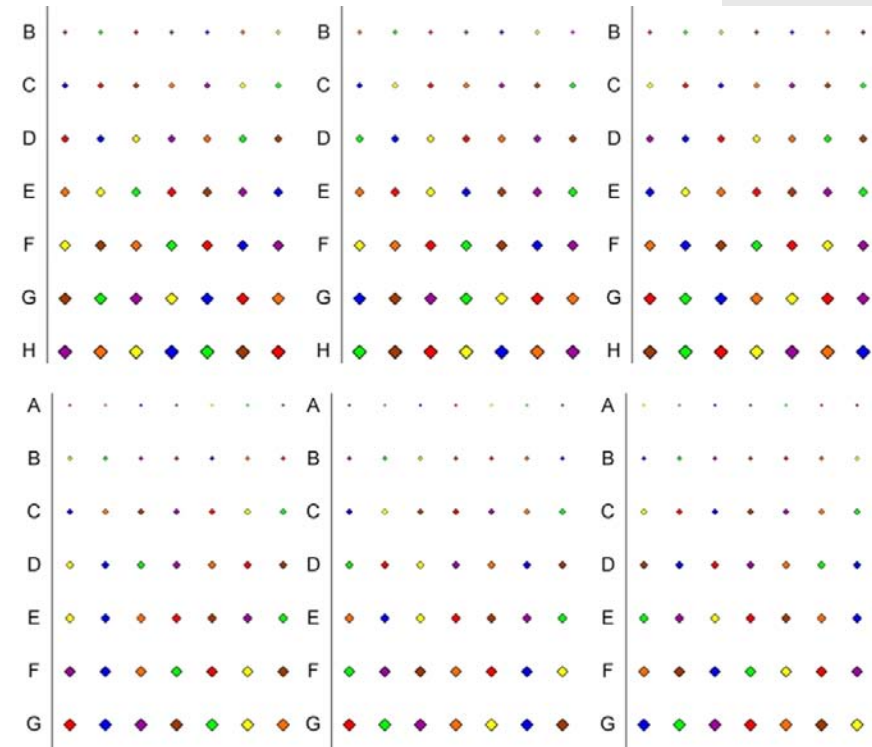


Fig.6: Test pattern 2

# Outlook

- As the first period of pre-tests finished now, it is on the project partners to analyse the collected data from the test patterns
- The results of this evaluation shall help to create the maps for the main tests, which are expected to start during the second half of this year

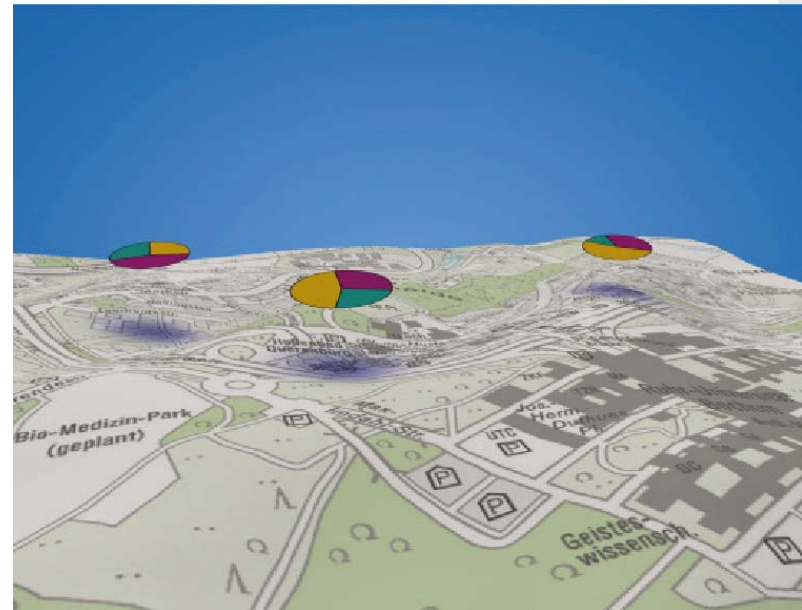


Fig.7: free floating map symbols